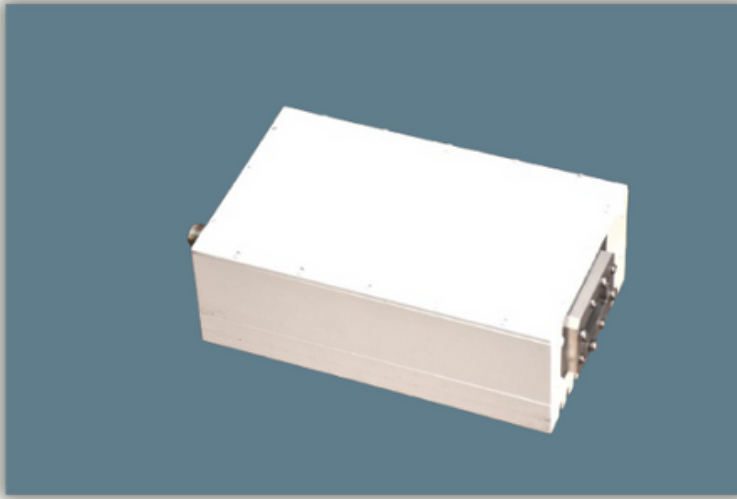




2W EXT C-BAND BUC



PRODUCT OVERVIEW

The DEFEL Ext. C-Band Block Up Converter (BUC) is a compact and robust solution for reliable satellite communication. Engineered to meet demanding operational environments, the BUC delivers superior performance with high gain, wide temperature range compatibility, and advanced control features.

Technical Specifications

Parameter	Specification
Frequency Band	Ext C-band
LO Frequency	5760 MHz
RF Output Frequency	6.71 – 7.01 GHz
IF Input Frequency	950 – 1250 MHz
Gain	60 dB (Typical)
Gain Control Range	30 dB
Gain Flatness	±2 dB (Typical)
Phase Noise	Meets or exceeds IESS 308/309 (Internal 10MHz clock)
10 MHz Reference	Internal/External/Auto-Sense: ±5 dBm
Output Power	2W
Input Voltage	40V DC
Input Connector	N-Type (DC + RF + 10 MHz)
RF Output Connector	CPR137G/N-Type
Operating Temperature	-40°C to +55°C
Status Indicator	Bi-color LED (Green/Red)
Encloser Dimension	194 x 119 x 67
Weight	≤ 5Kg
Status Connectivity	Round T-Pin, Serial Connector (RS232)